

Ena Energi



Ena Energi

The power plant Ena Energi AB is 100% owned by municipality.

The produced heat energy is distributed in Enköpings district heating network. The electrical energy produced is sold on the Nordic power exchange.



Secure - Simple - Affordable -
Environmentally friendly

Environmentally friendly

- Take advantage of resources that otherwise would be lost

Contributes to the reduction of greenhouse effect

Get emission points and effective treatment technology

<http://vimeo.com/54599174>

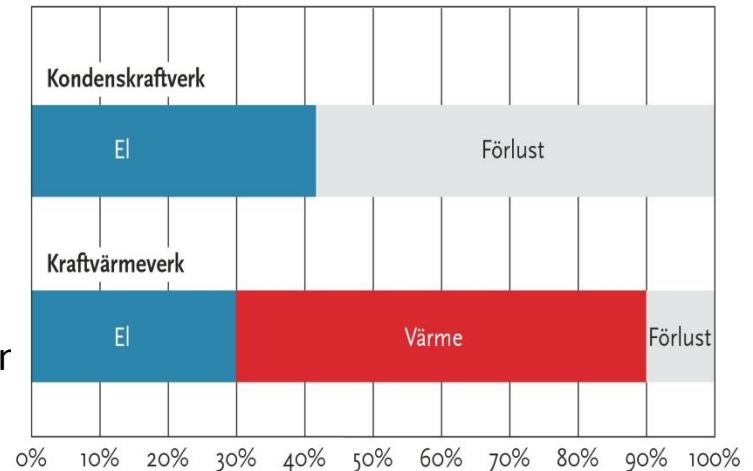


Secure - Simple - Affordable -
Environmentally friendly

Ta tillvara energi som annars går förlorad

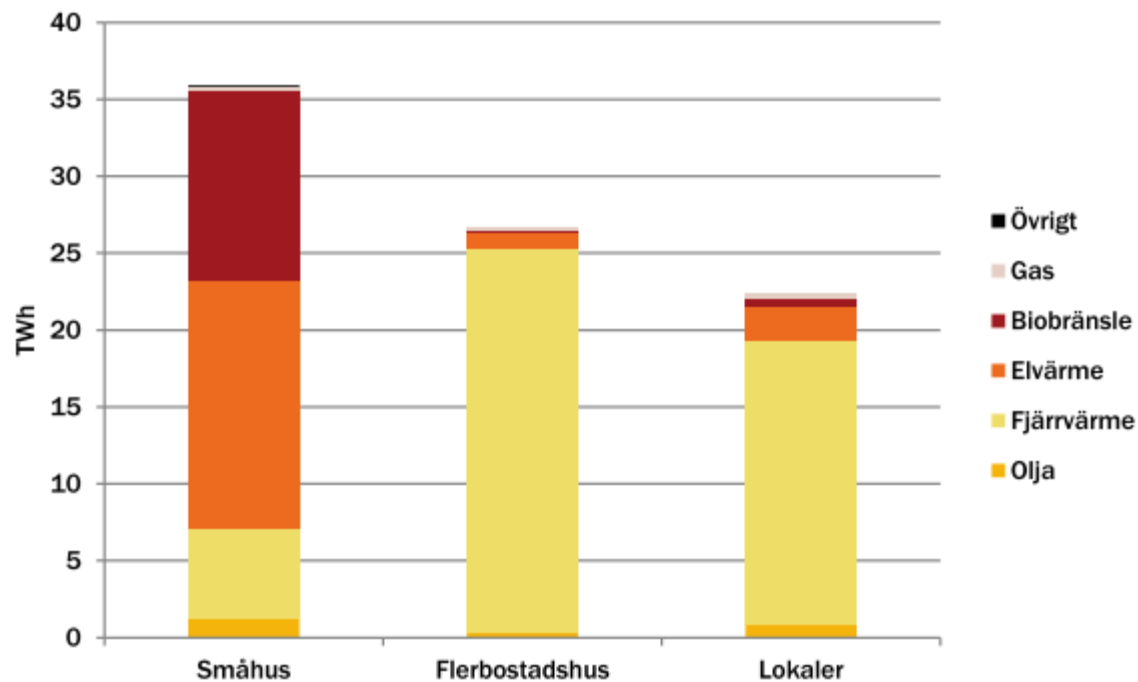
Kraftvärme

- Tar tillvara värme från elproduktion
- För lite utnyttjat i Sverige
- Utbyggd fjärrvärme kan öka kraftvärmens är mer i framtiden
- Hög verkningsgrad



Energianvändning

Figur 2 Energianvändning för uppvärmning och varmvatten uppdelat efter energislag och användarkategori år 2010



Källa: Energimyndigheten, 2011

Ena Energi Business Idea

Business Idea

Ena Energy is in an effective, vigorous competitor and environmentally way to deliver energy and energy-related products to customers and partners.



Secure - Simple - Affordable -
Environmentally friendly

Ena Energi Vision

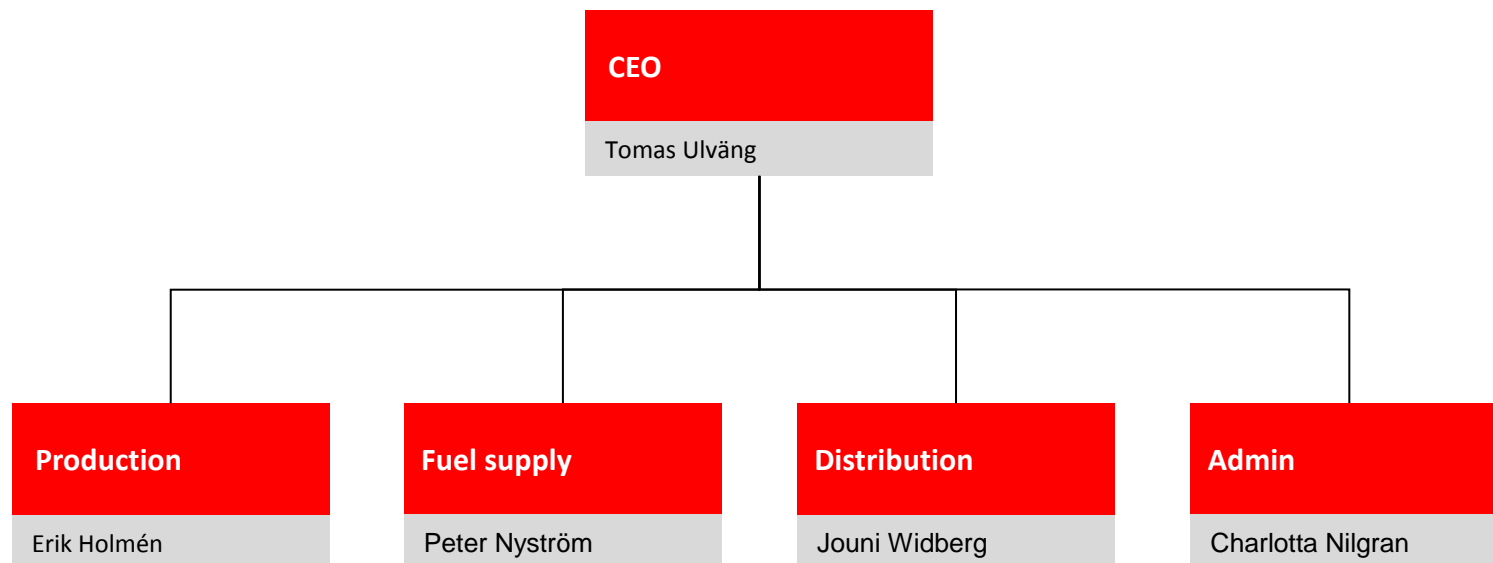
Vision

ENA Energy enables a safe and secure energy from the customer's individual needs.
We offer relevant energy products to support customer needs.
The obvious energy supplier for Enköpings municipality and its inhabitants.

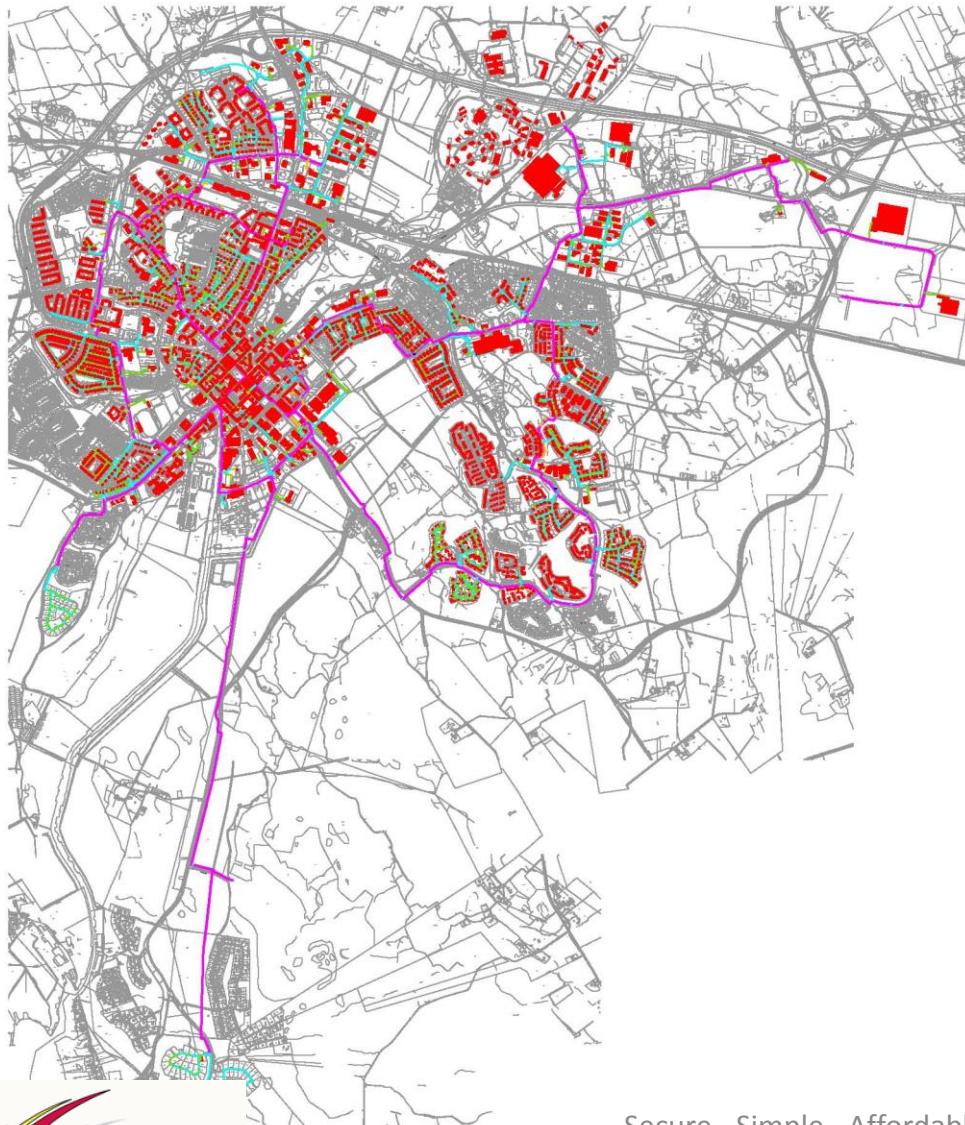


Secure - Simple - Affordable -
Environmentally friendly

Organisation



Distributionsnet



Facts:

Customers:	1,653 pcs
Connection rate	95%
Private house	77%
Net length:	100 km
Water volume network:	3900 m ³
Accumulator Volume:	7000 m ³

Production

Facts:

Ena Energy Plant:

Biofuel-fired power plants

Wood powder hot water boiler

2 oil fired boilers

Electric Boiler

Accumulator

Effekt

55 MW värme 24 MW el

22 MW

25 MW/50 MW

36 MW

25 MW/325 MWh



Secure - Simple - Affordable -
Environmentally friendly

Production

Plant Stenvreten

Oil-fired hot water boiler
Sewage gas from landfill

Effect

10 MW
200 kW

Plant Tjädern

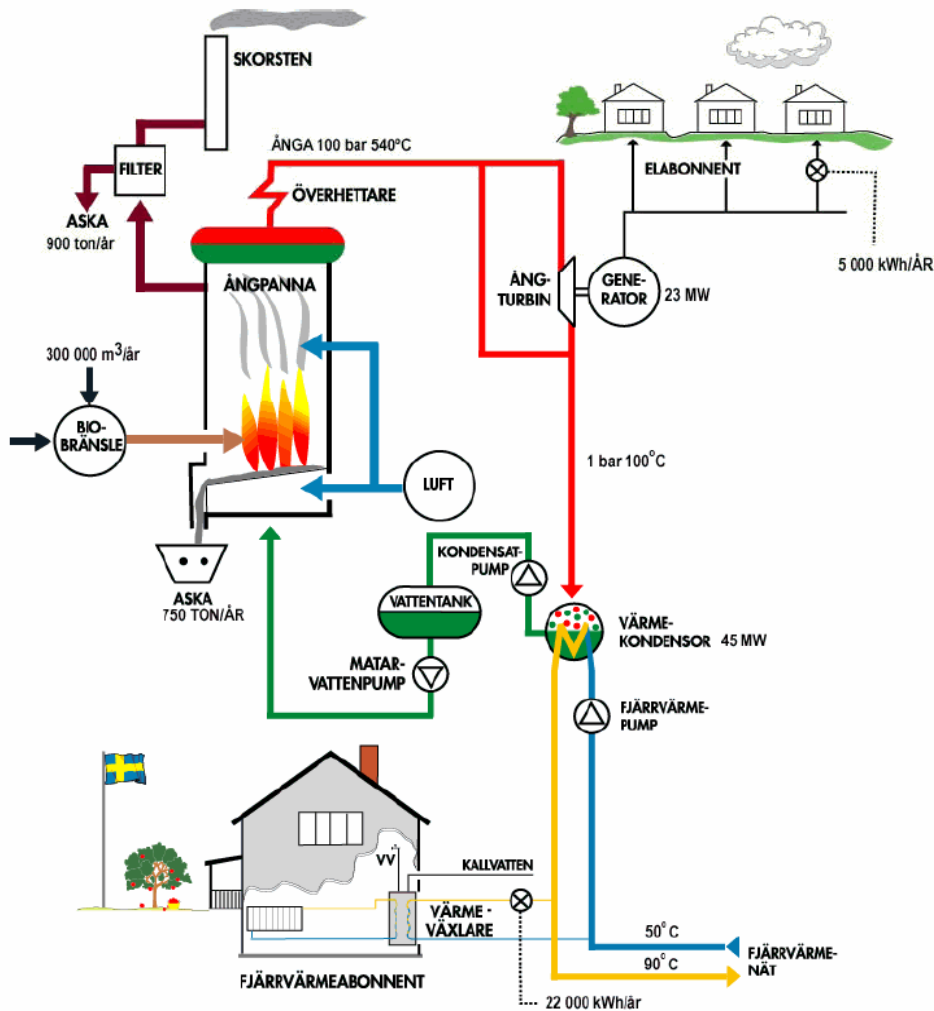
2 oil fired boilers

Effector

2 x 11,5 MW



Produktion



Fact: KVV

- 45 MW heating
- 23 MW of Electricity
- Flue gas cooler 8-14 MW
- Max Steam Flow 27 kg / s
- Vapor pressure 100 bar
- Vapor temp 540 °C
- Fuel approx. 110 m³ / h

Bränsle



Fakta:

Chips (16%)

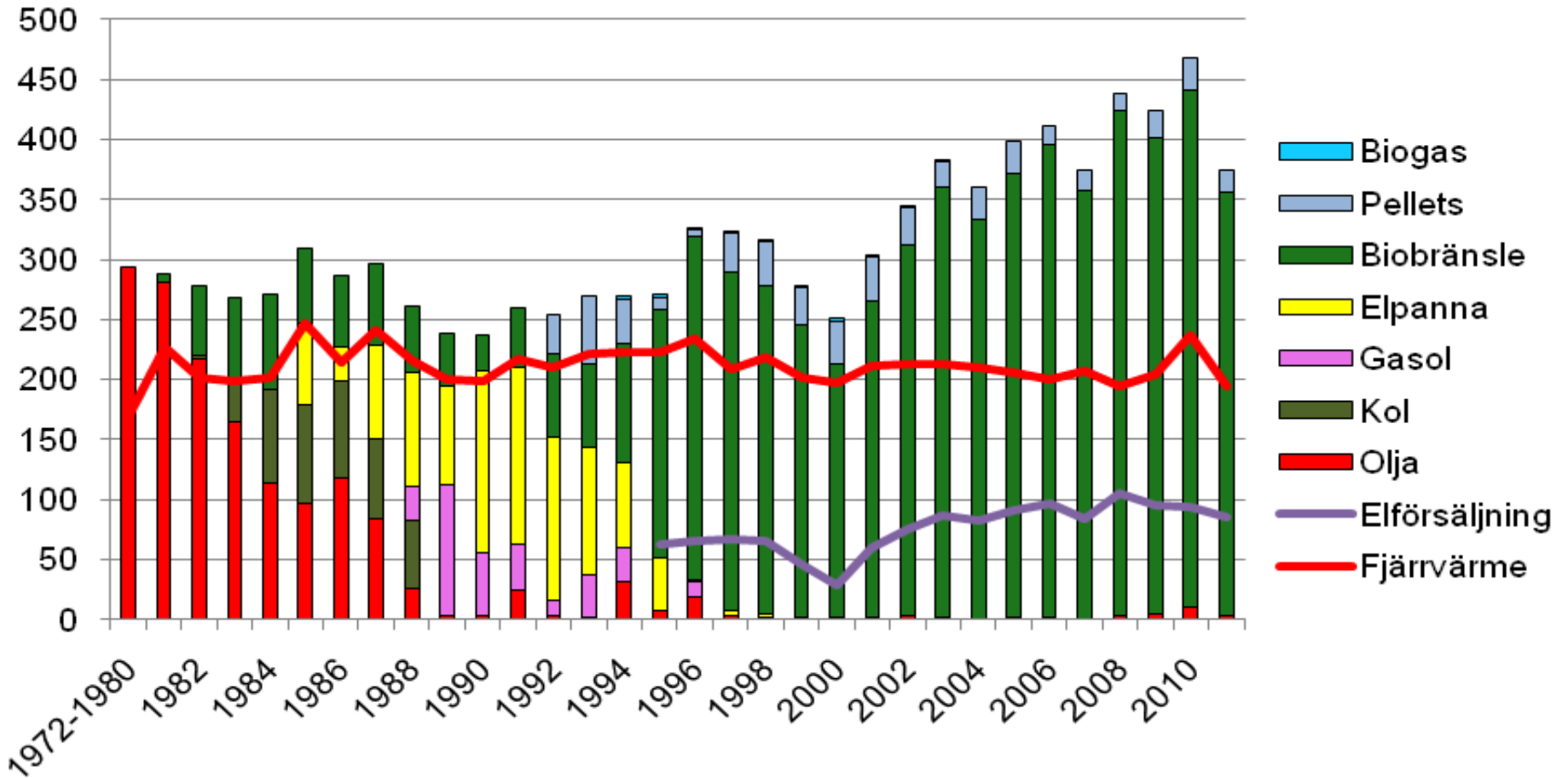
RW-chips (80%)

Salix(3%)

oil (1%)

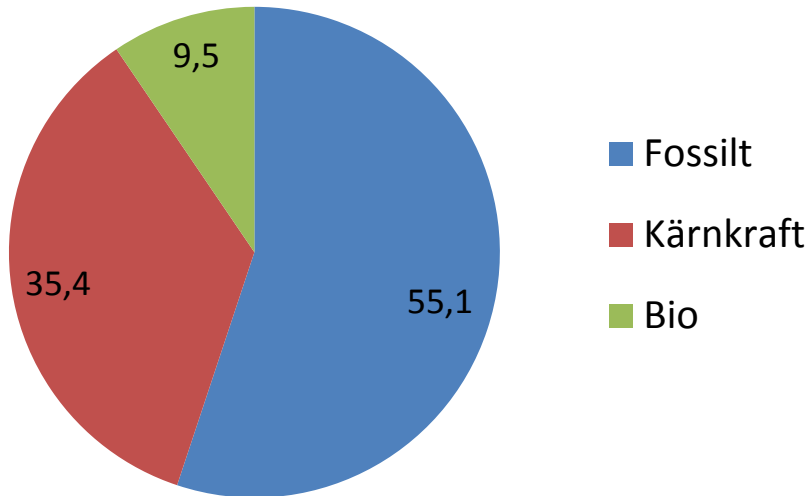
>99%

Bränslemix historiskt

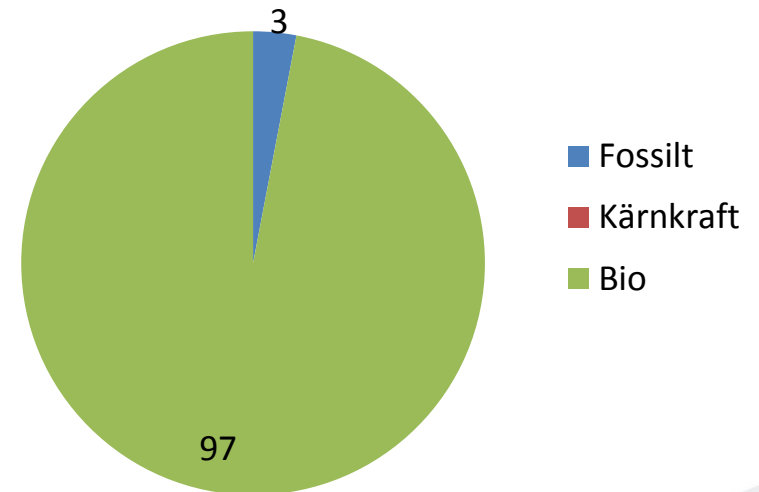


Andelen fossilt

El i Norden



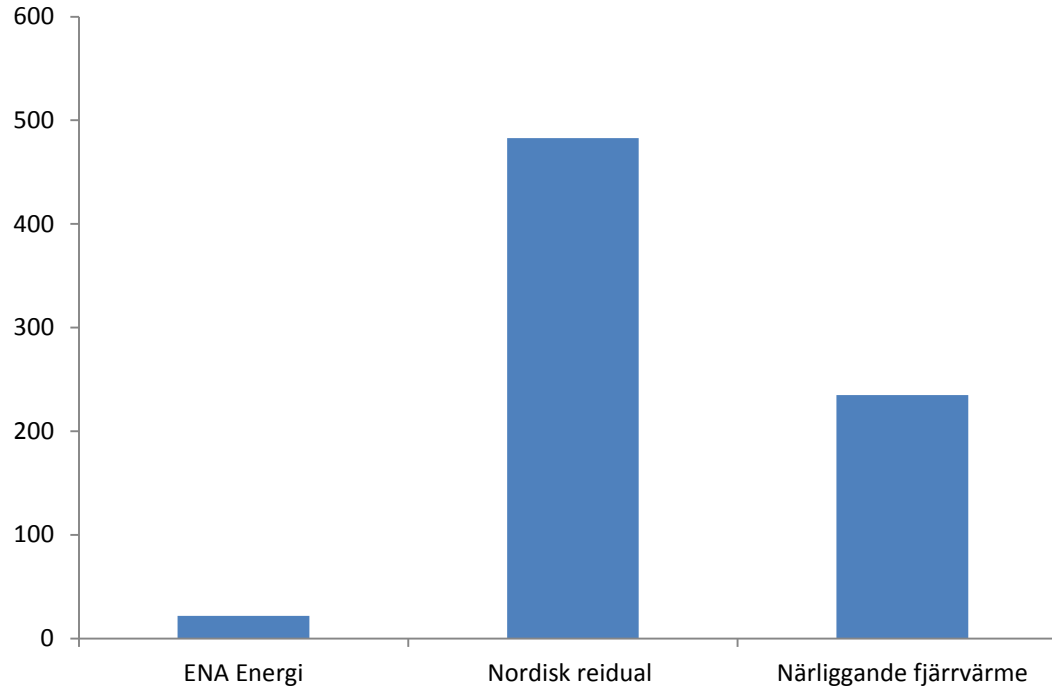
ENA Energi



	ENA Energi	Elmix (Residual)	Närliggande Värmeverk
Andelen fossilt	3%	55%	6%

Koldioxidutsläpp

Utsläpp Co2 per producerad energi



	ENA Energi	Elmix (Residual)	Närliggande Värmeverk
Klimat påverkan Co2 ekv	5	483	235

Frågor!