

Short Rotation Woody Crops (SRC) plantations for local supply chains and heat use

Project No: IEE/13/574



***1st training for public land
managers/owners***

25/08/2015

Valmiera, Latvia

WP 4 – Task 4.4

September 2015

Authors: Linda Drukmane
EKODOMA, Ltd.
linda.drukmane@ekodoma.lv
+371 67 32 32 12

Editors: Dagnija Lazdiņa, Silava

Contact: EKODOMA, Ltd.
Noliktavas 3-3
Rīga, LV-1010
LATVIA



The SRCplus project (Short Rotation Woody Crops (SRC) plantations for local supply chains and heat use) is supported by the European Commission in the Intelligent Energy for Europe Programme. The sole responsibility for the content of this report lies with the authors. It does not necessarily reflect the opinion of the European Union. Neither the EASME nor the European Commission are responsible for any use that may be made of the information contained therein. The SRCplus project duration is March 2014 to April 2017 (Contract number: IEE/13/574).



Co-funded by the Intelligent Energy Europe
Programme of the European Union

SRCplus website: www.srcplus.eu

Content

1	<i>Introduction</i>	4
2	<i>Involved stakeholders</i>	4
3	<i>Results</i>	5
4	<i>Evaluation of questionnaires</i>	5
5	<i>Lessons learned and adjustment of seminar concept</i>	9
6	<i>Annex</i>	11

1 Introduction

The aim of the training was to offer other possibilities for the public land owners on how to manage their land by developing plantations of short rotation crops.

Although the main target group was public land owners, due to some reasons there was very few interest from the target audience, so in order to make the event with added value, also other interested audience were invited.

The training took place on 25th of August, 2015 in Valmiera, Latvia. In order to offer more convenient venue for the participants, Valmiera was chosen as the centre of Vidzeme planning region.

All together 21 participant took part at the training, showing their interest in the topic.

The agenda included following topics:

- What is short rotation coppice? SRC in Vidzeme planning region. Existing situation. Barriers. Options. Practical examples.
- Afforestation and planting of woody plantations – regulatory framework.
- Sustainability criteria.
- Analysis of the unexploited potential for SRC in Vidzeme planning region.
- Strategy for new SRC plantations in Vidzeme planning region.
- Implementation concept for SRC in Vidzeme planning region.
- Financing possibilities for SRC.
- Synergies of SRC with other land uses.
- Good practice cases.

2 Involved stakeholders

As already described before, the main target audience was public land owners. With the help of Vidzeme planning region, the invitation to participate was sent out to all municipalities in the target region. As there were very few interested municipalities, the invitation to the seminar was also sent out to all municipalities in Latvia.

In order to gather at least 20 participants to the training, the invitation was sent also to other stakeholders who have showed their interest in the topic from previous events.

At the end the training was attended by representatives from municipalities, Ministry of Agriculture, private land/forest owners, journal on forest and wood sector, etc.

3 Results

Full day training gather different participants with different background and covered topics which are significant for anyone who is about to develop short rotation plantations.

Discussions and questions followed after each of the presentation thus showing that the participants had a real interest in the topic.

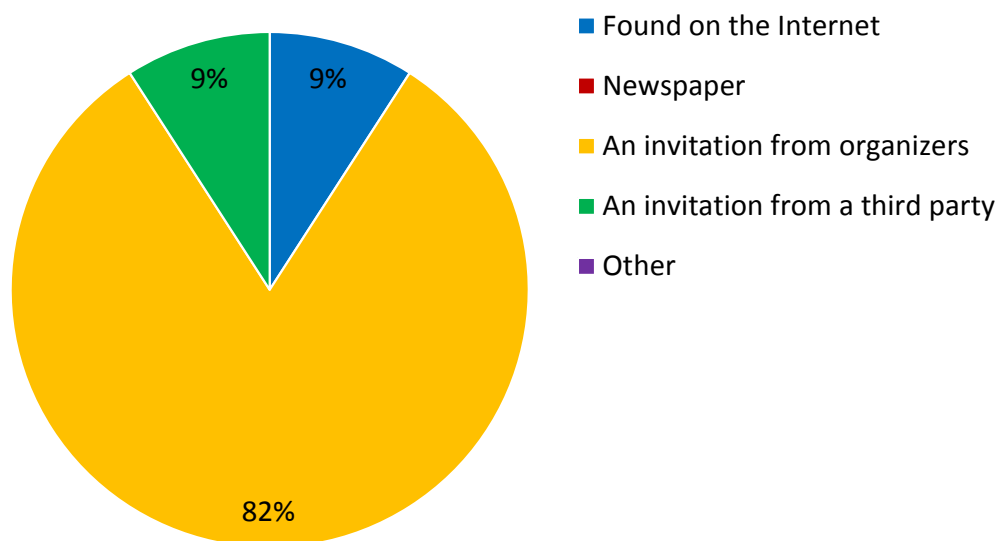
Linda Drukmane from Ekodoma introduced auditorium with the *SRCplus* project and possibilities how the participants could be involved in *SRCplus*. After the introduction Dagnija Lazdiņa (Silava) gave a summary on what are short rotation crops and what is the existing situation in Vidzeme planning region, giving some practical examples too. According to the type of land, the attention should be paid whether you are planning to develop woody plantations or forest plantations. This issue was explained by the representative from the Ministry of Agriculture Rita Benta. Training continued with two good practice examples – one on how to manage unused agricultural land (Lāsma Apsīte, Ecomark, Ltd.) and other – on different types of woody plantations (by Dainis Zuika, farm “Dārznieki”). Dagnija Lazdiņa gave a presentation on sustainability criteria of SRC, followed by three presentations on the research under the WP6 – presentations on Analysis of the unexploited potential in Vidzeme planning region (VPR), given by Kristaps Makovskis from Silava, Strategy for SRC plantations and Implementation concept for SRC in VPR presented by Linda Drukmane. The main focus and interest came on financing possibilities for implementation of SRC plantations. Representative from the Rural Support Service (Baiba Kiršblate) shared the latest information on support schemes. The training was concluded by Dagnija Lazdiņa showing the synergies with other types of land use.

The training was fruitful, gathering already experts in the field as well as those who want to learn about the advantages and possibilities of development of short rotation crops.

4 Evaluation of questionnaires

After the training the participants filled out a questionnaire in order to provide their feedback on the topics discussed, quality of training materials, as well as problems and barriers related to the implementation of SRC plantations. In total 11 filled questioners are received and analysed. Specific questions asked and feedback gained is provided below.

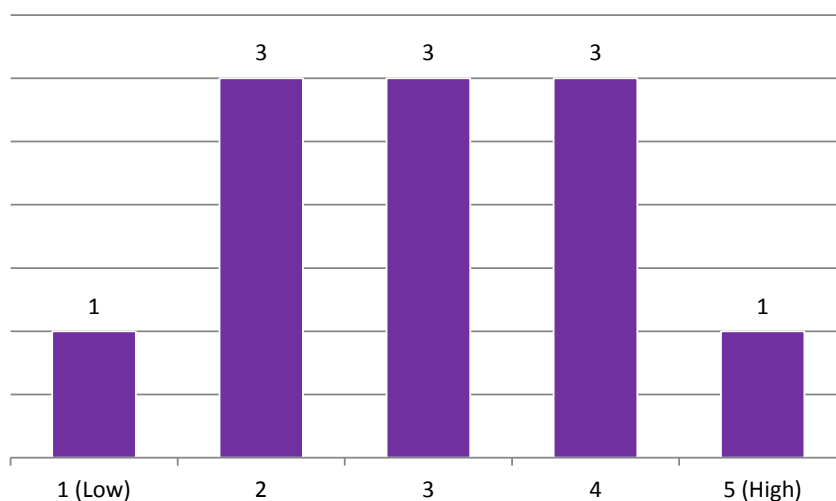
1. How did you hear about this event? (11 responses)



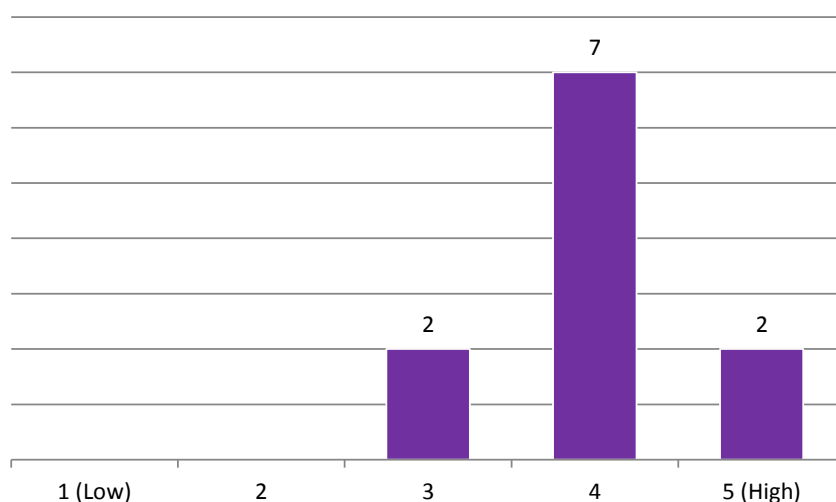
2. What are the reasons for you to take a part in the seminar? (16 responses)

General interest on renewable energy	4
General interest on SRC	5
Interest on available founds	2
Interest on SRC as fuel	2
Interest on possibilities to organize SRC plantations on the public c land	1
Other	2

3. Please indicate you original knowledge on the topics discussed during the seminar (1 – no knowledge; 5 – deep knowledge) (11 responses)



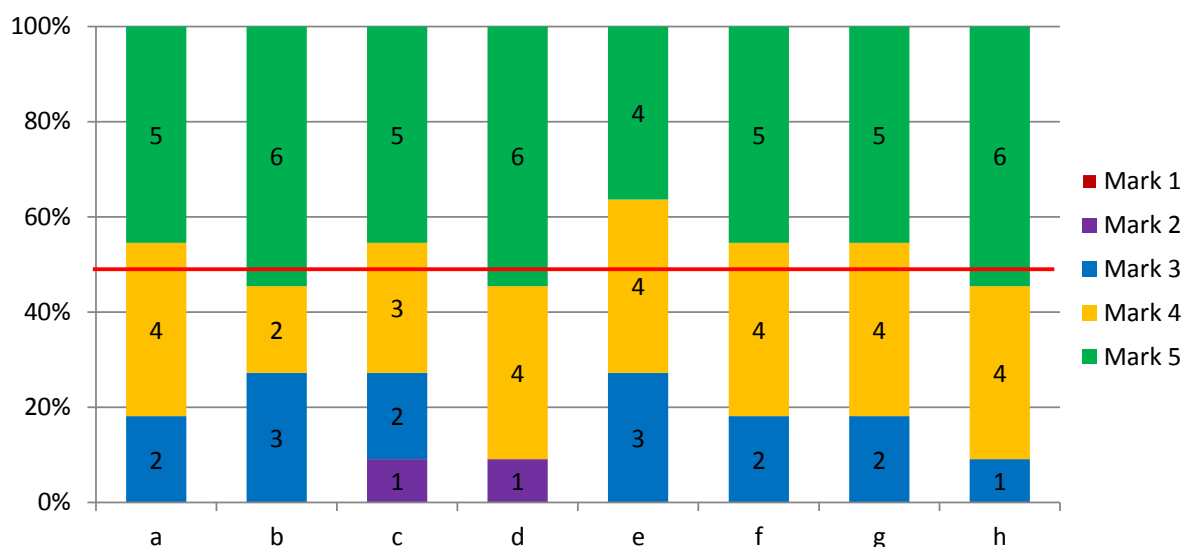
4. Please indicate you knowledge on the topics after the seminar (1 – no knowledge; 5 – deep knowledge) (11 responses)



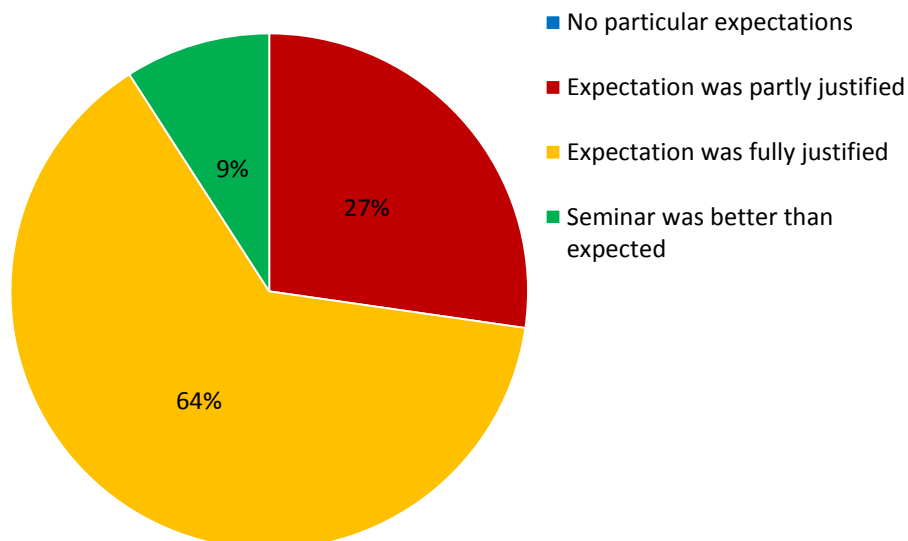
5. Please evaluate quality of the presentations giving 1 to 5 mark (1 – presentation was not understandable and improvements are needed; 5 - presentation was fully understandable, no improvements are required)

Presentation, topic		Mark				
		1	2	3	4	5
a	What is short rotation coppice? SRC in Vidzeme planning region. Existing situation. Barriers. Options. Practical examples.	-	-	2	4	5
b	Afforestation and planting of woody plantations – regulatory framework	-	-	3	2	6
c	Sustainability criteria	-	1	2	3	5
d	Analysis of the unexploited potential for SRC in Vidzeme planning region	-	1	-	4	6
e	Strategy for sustainable implementation and use of SRC in Vidzeme planning region	-	-	3	4	4
f	Implementation concept for SRC in Vidzeme planning region	-	-	2	4	5
g	Financing possibilities for SRC	-	-	2	4	5
h	Synergies of SRC with other land uses	-	-	1	4	6

Results of evaluation in graphical form are presented below.



6. Are your expectations on the topics and content justified? (11 responses)



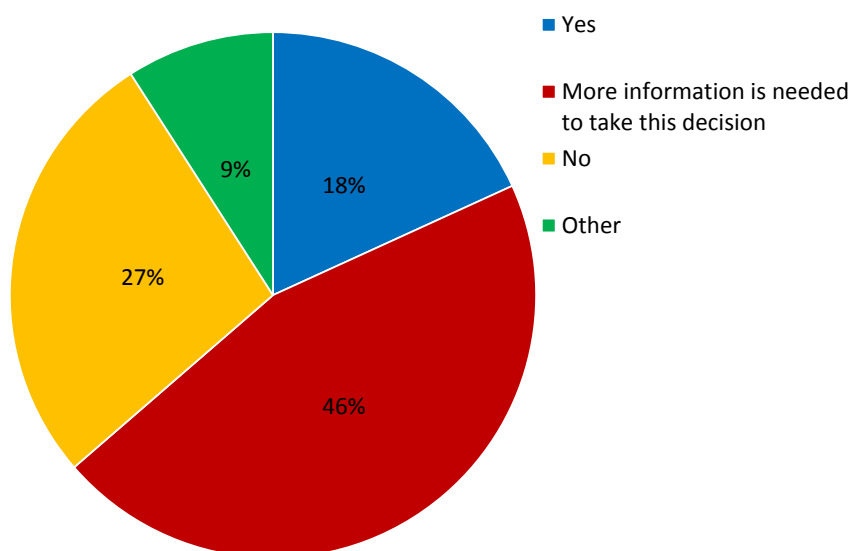
For more than 70% of respondents expectations were fully justified or event was better than expected. Almost 30% indicated that expectations were partly justified.

7. If your expectations are not justified, please indicate what should be improved and/or what are the new topics to be included (1 response)

- I was expecting bigger number of participants and opportunity to inform wider part of society about SRC production.

Only one answer was received regarding the reasons for not fully justified expectations. The lower number of participants than expected is mentioned. The reason is based on a very low interest from the target audience and difficulties to attract more stakeholders.

8. Are you interested to implement SRC plantations or there is need of more information and consultations? (11 responses)



Two respondents gave positive answer regarding their interest on SRC plantations. Almost half of the respondents need more information to take the decision. Three respondents are not planning to implement SRC plantations and for one respondent this question was not relevant.

9. If your answer on previous question was positive, on how big land area you are planning grow SRC and for which purpose? (3 responses)

- 2 ha, for timber production
- 2 ha
- Plantation of energetic SRC could be one of activities in rural areas, however, as farmers lacks knowledge, supervision from a bigger cooperative or other organisation is needed.

10. If now you will decide to implement a SRC plantation what are the main barriers? (10 responses)

- Current job, no free land owned, financial issues
- Amount of investments
- Lack of subsidies and technical solutions
- At many boiler houses only wood chips produced from log wood and round wood are used; no wood chips from branches and bushes are accepted;
- Too long payback period
- Legislative restrictions on use of meliorated areas for plantations
- Instability
- Comparatively high investments, in particular for harvesting technologies
- Investments related to preparation of land, price of planting materials and cuttings, management of the plantations, protection of plantations
- Investments, long payback period

5 Lessons learned and adjustment of seminar concept

Based on previous experience direct contact of the stakeholders is considered as the most efficient way to invite people to participate in seminars and training events. Main part of stakeholders and experts participated at the information day were invited by e-mail with the following phone call. Often, stakeholders already agreed on participation are informing and inviting other stakeholders. This tendency was observed many times during the project, therefore during organisation of upcoming events already invited stakeholders will be asked about possibilities to engage other related stakeholders.

Highest share of participants as the main reason for participation indicated general interest on SRC and renewable energy. Interest on specific topics, like use of SRC or financial support mechanisms is much lower. Partly it can be described by the novelty of SRC for the involved stakeholders, as well as different background of participants. Further information and trainings are needed.

Based on the feedback provided, it can be concluded that quality of the seminar was high. Approx. 70% of respondents indicated that their knowledge on the topics discussed have been improved after the seminar. Three respondents (~30%) mentioned that the knowledge level left on the same level, however all three originally had high level of knowledge (evaluated as 4 and 5). In general participants were satisfied with the quality of presentations. Only few negative marks are given to couple of presentations. However, minor improvements are recommended for most of the presentations.

Two respondents indicated that they are interested in implementation of SRC plantations (2 ha each). However, only one of two respondents is planning to use SRC as a source of wood materials. This particular respondent is a forest owner. Almost half of the respondents indicated that they need more information to take a decision. In order to improve knowledge on specific topics, training materials (both already published and planned) will be disseminated within the target audience. Training materials will be adjusted in order to focus more on the critical points.

Results of the questionnaire shows that investments and financial risks can be defined as a main source of concerns related to the implementation of SRC plantations. 70% of respondents are mentioning financial issues as a main or one of the main barriers. Regarding this conclusion financial aspects have to be better addressed in future trainings. Good practice examples and possibilities to reduce financial risks (e.g. cooperatives with common technological capacities), as well as other critical aspects (species, site preparation, use of fertilisers, etc.) affecting financial health of the projects have to be better discussed in future.

Quality issues of woodchips from SRC fuels will be addressed in upcoming seminars and trainings. However, in some cases combustion technologies might be designed for wood chips with the quality varying in a narrow range. In these cases use of different quality fuel and maintaining of high performance in the same time will require regulation of combustion process or even technological modifications.

6 Annex

Invitation to the training together with the agenda



Uzaicinājums piedalīties seminārā/apmācībās
VALSTS ZEMES ĪPAŠNIEKIEM
 par Īsirtmeta enerģētiskās koksnes stādījumu ierīkošanas
 iespējām

2015. gada 25. augustā
 „Valmieras Biznesa un inovāciju inkubators”, Purva iela 12A, Valmiera

Īsirtmeta atvasāji vai ilggadīgie kokaugu stādījumi, piemēram, kārkli, papeles, apses un baltalkšņi, ir ātri augošu koku sugas, kas atjaunojas, veidojot atvases vai kokaugu stādījumus, kuru vietā pēc koksnes ražas novākšanas ierīko citu lauksaimniecības kultūru.

Seminārā aplūkosim, kādas priekšrocības sniedz šādu stādījumu ierīkošana, normatīvo regulējumu atkarībā no zemes lietojuma veidu, kā veicas uzņēmējām, kuri jau ir ierīkojuši Īsirtmeta enerģētisko kokaugu stādījumus, kā arī ir potenciālās stādījumu vietas reģionā. Vairāk informācijas semināra programā.

Lūdzam reģistrēties dalībai seminārā, norādot vārdu, uzvārdu, organizāciju un kontaktinformāciju, nosūtot to uz linda.drukmane@ekodoma.lv vai sazinoties pa tālruni 67 32 32 12 līdz 21. augustam.

Vietu skaits ierobežots!

Apmācības ir bez dalības maksas.



www.srcplus.eu



Co-funded by the Intelligent Energy Europe Programme of the European Union



APMĀCĪBU PROGRAMMA

09:30–10:00 REĢISTRĀCIJA	
10:00–10:10 Par SRCplus projektu un tā mērķiem	Linda Drukmane SIA EKODOMA
10:10–11:00 Kas ir Īsirtmeta enerģētiskā koksne? Īsirtmeta enerģētiskā koksne Vidzemes plānošanas reģionā. Esošā situācija. Barjeras, iespējas, Praktiski piemēri	Dagnija Lazdiņa LVMI Silava
11:00–11:20 Meža ieaudzēšana un kokaugu stādījumi – normatīvais regulējums	Rita Benta Zemkopības ministrija Meža departaments
11:20–11:40 Labas prakses piemērs: kvalitatīvs stādmateriāls un servisa pakalpojumi	Reinis Silups SIA „SalixEnergi Baltic”
11:40–12:00 Labas prakses piemērs: neizmanto LIZ apgūšana	Lāsma Apšite SIA „Ecomark”
12:00–13:00 Pusdienas	
13:00–13:20 Labas prakses piemērs: dažādu sugu ilggadīgie kokaugu stādījumi	Dainis Zuika Z/S Dārznieki
13:20–13:40 Ilgspējības kritēriji	Dagnija Lazdiņa LVMI Silava
13:40–13:50 Ātraudzīgo kokaugu stādījumu potenciāls VPR	Kristaps Makovskis LVMI Silava
13:50–14:00 Stratēģija ilgtspējīgai ātraudzīgo kokaugu stādījumu ierīkošanai un izmantošanai VPR	Linda Drukmane SIA EKODOMA
14:00–14:10 Ātraudzīgo kokaugu stādījumu ierīkošanas un izmantošanas koncepcija VPR	Linda Drukmane SIA EKODOMA
14:10–14:20 Atbalsta iespējas ātraudzīgo kokaugu stādījumu ierīkošanai	Baiba Kiršblate Lauku atbalsta dienests Ziemeļvidzemes RLP
14:20–14:40 Kafijas pauze	
14:40–15:00 Enerģētiskā koksne granulu ražošanai	Mairis Reizīns SIA „NewFuels”
15:00–15:30 Īsirtmeta enerģētiskās koksnes sinerģijas ar citiem zemes izmantošanas veidiem	Dagnija Lazdiņa LVMI Silava
15:30–16:00 JAUTĀJUMI UN DISKUSIJAS!	



Co-funded by the Intelligent Energy Europe Programme of the European Union

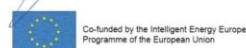
List of participants

APMĀCĪBAS PUBLISKO ZEMJU ĪPAŠNIEKIEM DALĪBNIEKU SARAKSTS

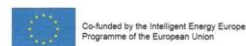
2015. gada 25. augusts, Valmieras Biznesa un inovāciju inkubators, Purva 12A, Valmiera

10:00–16:00

N.p.k.	Vārds, uzvārds	Institūcija	Kontaktinformācija	Paraksts
1.	Ineta Eriksone	Siguldas novada Dome	ineta.eriksone@sigulda.lv	
2.	Inese Ščerbakova	Vidrižu pagasta pārvalde	inese.scerbakova@limbazi.lv	
3.	Marita Brusova	A/S „Latvijas valsts meži”	m.brusova@lv.m.lv	
4.	Raimonds Mežaks	Mežsaimniecības demonstrējumu teritorija 'Pūpoli'	raimonds.mezaks@gmail.com	
5.	Aldis Jansons	Zemkopības zinātniskais institūts	szc@inbox.lv	
6.	Sarmīte Daudziete	Smiltenes novada dome	sarmite.daudziete@smiltene.lv	
7.	Aigars Roga	„Baltijas Koks”	26129307	
8.	Rita Benta	Zemkopības ministrija, Meža departaments	rita.benta@zm.gov.lv	
9.	Kristīne Sirmā	Zemkopības ministrija, Lauksaimniecības departaments	kristine.sirma@zm.gov.lv	

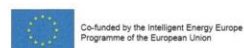


N.p.k.	Vārds, uzvārds	Institūcija	Kontaktinformācija	Paraksts
10.	Ieva Līcīte	Zemkopības ministrija, Lauksaimniecības departaments	ieva.licite@zm.gov.lv	
11.	Reinis Silups	SIA „SalixEnergi Baltic”	reinis.silups@salixenergi.se	
12.	Lāsma Apsīte	SIA „Ecomark”	lasma.apsite@latvianbioenergy.lv	
13.	Dainis Zuika	Z/S „Dārznieki”	darznieki212@inbox.lv	
14.	Baiba Kiršblate	Lauku atbalsta dienests, Ziemeļvidzemes RLP	baiba.kirsblate@lad.gov.lv	
15.	Mairis Reiziņš	SIA „NewFuels”	mairis.reizins@newfuels.eu	
16.	Dagnija Lazdiņa	LVMI Silava	dagnija.lazdina@silava.lv	
17.	Kristaps Makovskis	LVMI Silava	kristaps.makovskis@silava.lv	
18.	Linda Drukmane	SIA EKODOMA	linda.drukmane@ekodoma.lv	
19.	Valdis Gašlums	SIA Pata AB	valdis.gaslums@pata.lv	
20.	Rihards Kaivāns	SIA ECOMARK	rihards@ecomark.lv	
21.	Mudrīte	SO, Valsts ierēdņu dienests	mudrite.dauks@kara.lv	





N.p.k.	Vārds, uzvārds	Institūcija	Kontaktinformācija	Paraksts
22.	Andis Dainiņš	LVMI "Silava"	andis.dainin@silava.lv	
23.	IEVA KALNIŅA	VPR	iera.kalnina@vidzem.lv	
24.	FANIS KNIPIŠIS	MEŽA TĒSĀBĪBN	knipis@meza.gov.lv	
25.				
26.				
27.				
28.				
29.				
30.				



Photos



Dagnija Lazdiņa, Silava



Rita Benta, Ministry of Agriculture



Lāsma Apsīte, ECOMARK, Ltd.



Dainis Zuika, "Dārznieki"

Training material (presentations)

All presentations from the seminar are available at the SRCplus home page:

<http://www.srcplus.eu/en/2-uncategorised/135-lv-seminar1-public-land-owners.html>